



SALEM STAINLESS STEEL SUPPLIERS PVT. LTD.  
"TOWARDS STAINLESS WORLD"

Cherishing 31 Years of Stainless Journey

***Towards a*** **Stainless World**



 +91-9840086688

 [rajesh@fouressgroup.in](mailto:rajesh@fouressgroup.in)



SALEM STAINLESS STEEL SUPPLIERS PVT. LTD.  
"TOWARDS STAINLESS WORLD"



## ***Introduction :-***

A brief about SSSS: Salem Stainless Steel Suppliers Private Limited , introducing Salem Stainless Steel Suppliers Pvt. Ltd., popularly known as SSSS ( Fouress ) Headquartered at Chennai, Salem Stainless Steel Suppliers Pvt. Ltd.

started its operations in 1984 as dealers of Salem Steel Plant, SAIL. SSSS has stock yards and sales offices in Chennai, Coimbatore, Cochin, Hyderabad , delhi and Mumbai and have been clocking sales of 25000 MT of flat products and 6000 MT of long products annually. With a total storage space of about 50000 sq. feet across India and an inventory of 5000 tons, SSSS caters to about 1000 OEMs and 125 dealers across the country. Among the many firsts, SSSS is equipped with state of the art CTL / No.4 line dedicated exclusively for the cutting of stainless steel in Hyderabad and Telangana . Also, SSSS has introduced the first N4P line in the state of Telangana recently and the work on India's biggest Stainless Steel processing center coming up at Chennai is fast progressing are constructed by 2023 middle with tube mill



+91-9840086688



rajesh@fouressgroup.in



SALEM STAINLESS STEEL SUPPLIERS PVT. LTD.  
"TOWARDS STAINLESS WORLD"




## About Us

SSSS is in to the business of distribution and processing of stainless steel, to serve its valued customers with material conforming to highest standards of processing tolerances. Our Service Center Facilities is located in Chennai with state-of-the-art, high-end Precision Slitting, Cut to Length, Blanking, and Polishing lines supplied by leading Equipment manufacturers.

A Similar Service Center will be soon be operational at Secunderabad and Mumbai.

Established in the year 1984, Salem Stainless Steel Suppliers (P) Ltd. Head Quartered in Chennai & Mumbai, India. The company is a Pioneer dealer of Salem Steel Plant, a unit of SAIL. We have set benchmarks of excellence in the arena of supplying ferrous as well as non-ferrous metals serving an assortment of industries. Our specialization lies in a bouquet of products in which we have carved a niche as one of the leading stockiest, importers and suppliers of stainless steel coils, plates, sheets, pipe, bars & fittings. Growing tremendously in the domain, we have established imprints in the minds of global clients by serving them with superior quality products. Moreover, under the astute guidance of our chairman, we have established an indelible place in the buoyant market economy with a turnover of above INR 3.5 Billion with inventory of 5000 Tons.

 +91-9840086688

 [rajesh@fouressgroup.in](mailto:rajesh@fouressgroup.in)



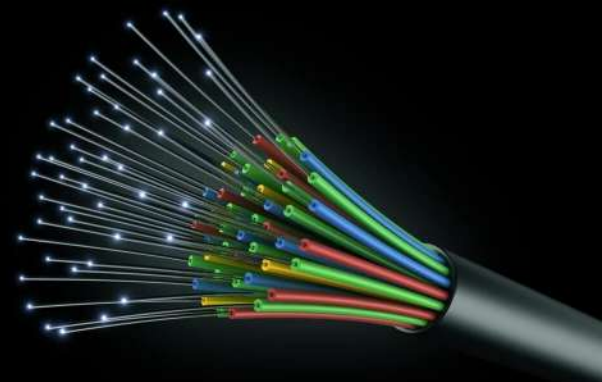
SALEM STAINLESS STEEL SUPPLIERS PVT. LTD.  
"TOWARDS STAINLESS WORLD"

## SOME OF THE MANY SERVICES OFFERED ARE :

- ✓ Customized Stainless Steel Products
- ✓ Shearing (CTL)
- ✓ Slitting (narrow and wider width)
- ✓ Cut to size material
- ✓ De coiling (mother coil to baby coil)
- ✓ Matt / BA polishing for sheets & Pipes
- ✓ Designers Sheets
- ✓ No.8 Finish sheets \ coils
- ✓ Warehousing
- ✓ Material Testing(PMI , lab test)



# ➤ APPLICATION



Application Area	Typical Application
➤ Architecture	Doors, Arches, Window Frames; Column Facings, Roofing, Flashing, Copings, Fascia, Curtain Walls, Gravel Stops & Drains.
➤ Chemical Processing	Pumps, Valves, Heat Exchangers, Vessels, Piping, Tanks, Filters, Mixers, Instruments, Reactors, Dryers, Columns, Meters, Sifters, Screens & Centrifuges .
➤ Consumer Products	Consumer Durables, Home Furnishings, Hardwares, Washing Machine, Cooking Ranges, Dish Washer, Tableware Furniture, Accessories, Containers, Kitchen Applications & Utensils.
➤ Environment	Sludge Handling Equipment, Flue Ducts, Scrubbers, Aerators, Water Treatment Plant, Valves & Piping.
➤ Food Processing	Food Handlers, Tanks, Containers, Mixing Equipment, Dicers, Agglomerators, Conveyors, Panel Walls & Processors.
➤ Pharmaceuticals	Vats, Vessels, Mixing Equipment, Piping, Valves, Pumps, Reactors Tablet & Packaging Machines.
➤ Petroleum Refining & Petrochemicals	Heaters Tubes, Heat Exchangers, Tanks, Reactors & Pressure Vessels..
➤ Pulp & Paper	Grinder, Water Sprays & Showers, Screening & Dewatering Equipment, Pulp Digestors, Cooking & Washing Towers Bleaching Equipment & Paper Making Machines .

## **PRODUCT RANGE - GENERAL**



### **STAINLESS STEEL PIPES & TUBES**

Seamless & ERW in AISI 201, 202, 304, 304L, 316, 316L 321 & 310 Grades.



### **STAINLESS STEEL POLISH PIPES**

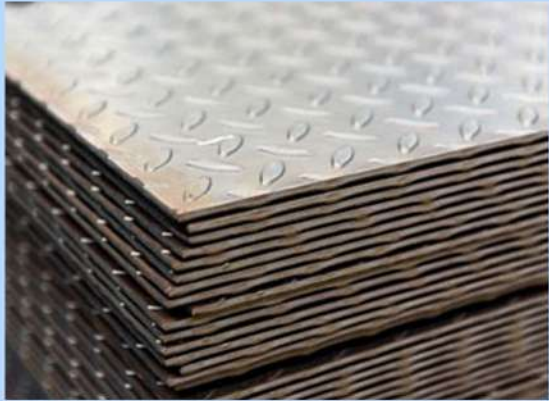
IS 1239 Light, Medium & Heavy. "A" Class, "B" Class & "C" Class, Mild Steel Carbon Tube ASTM A 106 GRB ASTM 53 in all series, Boiler Quality Tubes BS 3059 Part 1 & BR & NON IBR. Also, Hydraulic Tubes, Casting Pipes etc. available in size of 3 mm to 650 mm.



### **STAINLESS STEEL ROD**

202, 304L, 316, 316L, 310, 310S, 309, 301S, 316Ti, 321, 904L, 409M, 409L, 409 430, 441, 410, DUPLEX Rods, DUPLEX 2205 Rods, DUPLEX 2507 Rods, etc.

# PRODUCT RANGE - GENERAL



## **STAINLESS STEEL GRIPPY CHEQUERED SHEET .**

202, 304, 304L, 316L, 316, 310, 310S, 316Ti, 309, 301S, 321, 409L, 409, 430, 304L 409M, 441, 410, DUPLEX Stainless Steel grippy Chequered Sheet, etc .



## **ALUMINIUM**

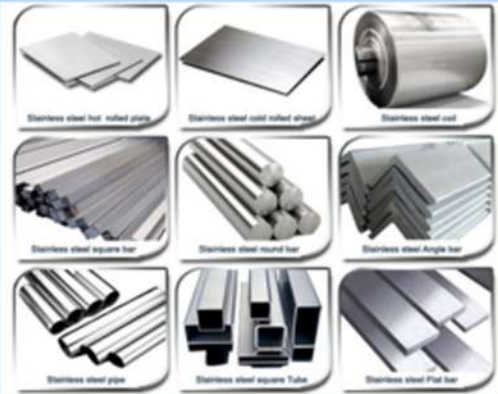
Rods, Sheets, Plates, Strips, Flats, Wires, Pipes, Rolls. Circles, Rectangular, Hexagonal bars fittings etc. in all grades.



## **FERROUS AND NON FERROUS METALS**

White Metal, Gun Metal, Tin, Solder Antimony & all other Virgin Metals

# PRODUCT RANGE - GENERAL



## **HIGH NICKEL ALLOYS**

Monel, Nickel, Inconel titanium. Sheet, Coil, Plates, Pipes & Rod.



## **DUPLEX & SUPER DUPLEX**

Stainless steel duplex & super duplex plates, coil, sheets, pipes & rod.



## **253 MA, ALLOY 20, 2016MO3**

Stand sheet 253 MA & 16MO3 Coil, sheet, plate etc.

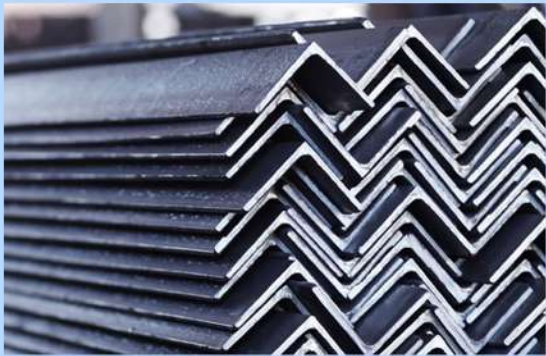


## **PRODUCT RANGE - GENERAL**



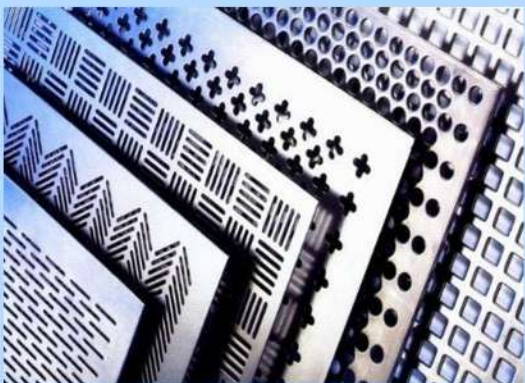
### **STAINLESS STEEL CHANNEL**

EN8,9.19 & 24,36 High Carbon & High Chromium Silver Steel. Die Steel, Carbon Steel, Mild Steel Bright Bars etc. in shapes of Round, Square, Rectangular, Triangle, Flats & Circles.



### **ANGLES & FLAT**

Available in Stainless Steel. Original & Plate Benced items are available as per customer's specification and grade.



### **PERFORATED SHEETS**

Available in Stainless Steel Brass & Copper Useable for sugar industries, Fertilizers & Chemicals & Paperin all sizes and grades.



+91-9840086688



rajesh@fouressgroup.in

# PRODUCT RANGE - GENERAL



## **AUTOMOBILES, RAILWAYS & TRANSPORT**

- Auto Components
- Bus Bodies
- Tippers
- Rail wagon/Coaches
- Auto Exhaust
- Auto Trims
- Gaskets



## **FABRICATION WORKS**

- Heat Exchanges
- Pressure Vessels
- Condensors
- Instrumentation
- Pipe Lines
- Tanks



## **INDUSTRIAL GOODS**

- Cold Rolling
- Power Plant Equipment
- Pharma
- Chemical
- Refinery
- Dairy

# PRODUCT RANGE - GENERAL



## **KITCHEN WARES & LIFESTYLE**

- Cookware
- Tableware
- Kitchen Tools
- Utencils
- Gas Stoves
- Modular Kitchen
- Sculptures
- Appliances
- Home Decoration



## **Architecture & Building**

- City Decoration
- Furniture
- Sinks
- Hand Railings
- Hotels & Malls
- Monuments



+91-9840086688



rajesh@fouressgroup.in

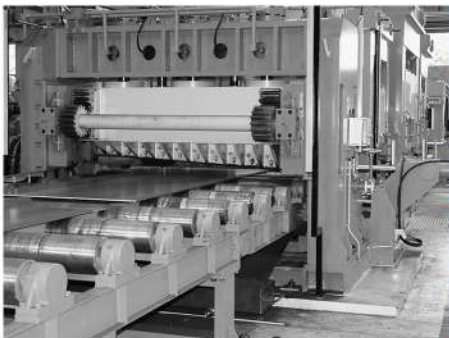
# **IN HOUSE FACILITY**



The company is into the business of distribution and processing of stainless steel, to serve its valued customers with exact Slit, Cut to Size, Polished Stainless Steel sheets, coils and blanks conforming to highest standards of processing tolerances. Our Service Centre facilities is located in Chennai with state-of-the-art, high-end Precision Slitting, Cut to Length, Blanking, and Polishing lines supplied by leading equipment manufacturers.

## **Cut to Length Leveling**

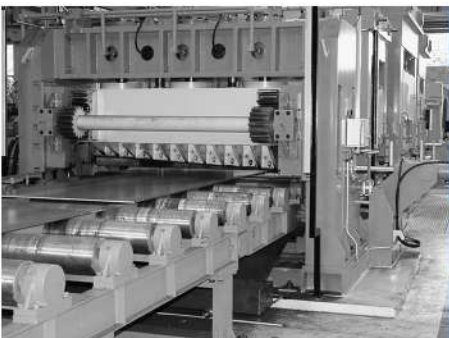
Fully automatic 1550 mm width with 6H leveler Cut to Length Line.



Thickness	0.40 mm ~ 6.00 mm
Width	500 mm ~ 1500 mm
Length	Any Length
Coil Weight	Upto 20.00 m/ton
PE Coating	One Side or Both side

## **No.8 / Mirror / BA Polishing Line**

Fully Automatic Rotary Type 8 Super Mirror Polishing Machines-7 Line.



Thickness	0.40 mm ~ 3.00 mm
Width	1000 mm ~ 2000 mm
Length	1000 mm ~ 6000 mm
PE Coating	One Side or Both side

**IN HOUSE**  
**FACILITY**



## No.4 / Matt Polishing Line

Fully automatic Wider Width 1550 mm Slitting Line.



Thickness	0.40 mm ~ 3.00 mm
Width	1000 mm ~ 2000 mm
Length	1000 mm ~ 6000 mm
PE Coating	One Side or Both side

## Slitting Line ( Wider Width )

Fully automatic Wider Width 1550 mm Slitting Line.



Thickness	0.30 mm ~ 3.00 mm
Mother Width	200 mm ~ 1550 mm
Slitting Width	40 mm ~ 1550 mm
Coil Weight	Upto 25.00 m/tons
PE Coating	One Side or Both side

## Slitting Line ( Narrow Width )

High Precision Narrow Width Slitting Line. (4 lines).



Thickness	0.10 mm ~ 1.50 mm
Mother Width	50 mm ~ 450 mm
Slitting Width	5 mm ~ 450 mm
PE Coating	One Side or Both side

# IN HOUSE FACILITY



## Plasma Cutting

From money installment to bank exchange, we are OK with any of these installment choices. According to your benefit, you can make the installment for your request. Stainless Steel Pipes Supplier, Stainless Steel Pipes Manufacturer, Stainless Steel Pipes Provider. Being a quality-cognizant firm, we are putting forth out and out the best quality items from Chennai(India).



Thickness	6 mm ~ 100 mm
Width	500 mm ~ 2000 mm
Length	Any length

## Circle / Ring Cutting

From money installment to bank exchange, we are OK with any of these installment choices. According to your benefit, you can make the installment for your request. Stainless Steel Pipes Supplier, Stainless Steel Pipes Manufacturer, Stainless Steel Pipes Provider. Being a quality-cognizant firm, we are putting forth out and out the best quality items from Chennai(India).



Thickness	0.30 mm ~ 6 mm
Width	DIA
Length	Any Length



**GRIPPY**  
TOWARDS A SLIP-FREE WORLD



[www.sssgroup.com](http://www.sssgroup.com)

# SALEM STAINLESS STEEL SUPPLIERS PVT LTD

Introduces Grippy sheets - Slip resistant, Chequered Stainless Steel Sheets designed to transform the most demanding environment into safe and productive areas.

SS Sheets are processed to create a perfect design that limits the risk of slipping and increases the level of protection from chemicals or foot traffic for any surface.

## Grades

All major Stainless steel Grades like **202, 304, 316L, 321, 409M CK201, 430 etc.,**

## Thickness and size range

0.8 mm Thk to 6.0 mm Thk  
width 1250 x 2500, 1500 x 3000, 1250 x any length, 1500 x any length  
Any other custom dimensions can be processed and supplied



ANTI SKID



SLIP FREE

## ADVANTAGES

### Advantages of Stainless Steel Grippy Sheets over Wood, Aluminium & Mild Steel

- 1 High strength to weight ratio
- 2 Low in maintainance
- 3 Longer life cycle, hence reduced life cycle cost
- 4 Superior abrasive resistance
- 5 Higher Tensile Strength because of cold forming
- 6 Fire resistance - Highest oxidation resistance at high temperatures
- 7 Rust free & Hygienic
- 8 Food Grades also available



No Minimum Order Quantity  
for Standard Sizes & Grades



Good Resale value



100% Recyclable

Specification	Stainless Steel Grippy	Conventional Carbon Steel Chequered	Aluminium Chequered	Wood Chequered
Strength to weight ratio	Very High	Medium	Poor	Poor
Maintanance	Very Poor	Medium	Medium	Very High
Life cycle of the product	Very High	Medium	Medium	Poor
fire resistance	Very High	High	Medium	Very Poor





## APPLICATIONS

### Elevator flooring and Escalator

Will support huge passenger flow and avoid regular damage from heavy steel carts and trolley movement.

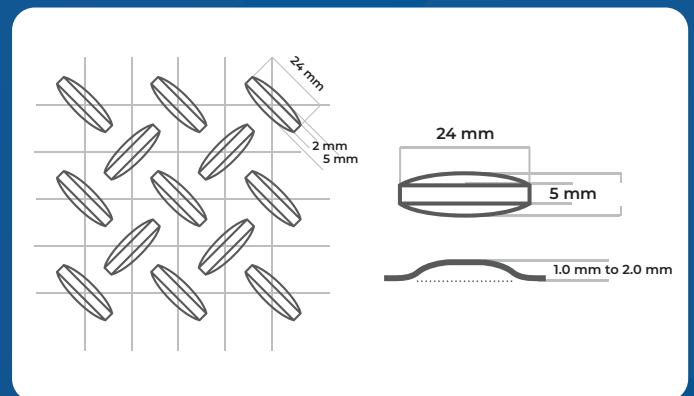
### Industrial Floorings

Most demanding environment can be made into safe and productive areas in various Industries like:

Dairy, Paper, Chemical, Oil & Gas, Shipping, Cement, Rice Mills and many more...

### Public Area And Transport

It creates a perfect design that limits the risk of slipping and increases safety features in public transportation like Airport, Railways, Buses, Metros, Swimming Pools, Parks, Ports, etc.,



Length	: 24mm
Width	: 5mm
Height	: 1.0mm to 2.0mm
No of leaves in 100x100sqmm	: 16-20 leaves

Specification	SS 201 Grade GRIPPY SHEET	Conventional MS Chequered Plate	Aluminium 3.0 MM	Wooden
<b>Commercial Comparison for 1000 Sq Ft</b>				
Thickness	1.0 MM Thk	2.0 MM Thk	3.0 MM Thk	16.0 MM Thk
Weight / Sq Ft	0.75 Kgs / Sq Ft	1.50 Kgs / Sq Ft	0.75 Kg / Sq ft	NA
Rate approx*	₹ 150.00	₹ 50.00	₹ 200.00	₹ 3800 / sheet
Rate / Sq Ft	₹ 112.00	₹ 75.00	₹ 150.50	₹ 118.75
Epoxy Paint / Coating	0.00	₹ 20.00	₹ 0.00	₹ 10.00
Life Cycle of Paint	No maintainance	3 Years	No maintainance	No maintainance
Life Cycle of Sheet	20 Years	7 Years	3-5 Years	3-5 Years
Cost of Sheet Replacement	₹ 0.00	₹ 285.00	₹ 600.00	₹ 515.00
Less Resale Value	₹ 33,750.00	₹ 54,000.00	₹ 2,70,000.00	₹ 0.00
Approx COST for a 20 Year Period	₹ 78,750.00	₹ 3,26,000.00	₹ 4,80,000.00	₹ 6,43,750.00

Note: Stainless Steel Cost may vary based on the Grade selected

## Stainless Steel Grippy Sheet Is Always The Right Choice



Stainless Steel  
Chequered Sheet



Aluminium  
Chequered Sheet



Mild Steel  
Chequered Sheet



Wooden  
Chequered Sheet

### An Initiative of **SALEM STAINLESS STEEL SUPPLIERS PVT. LTD. (SSSSPL)**

The young and dynamic entrepreneurs behind SSSSPL are strong believers in the maxim "Only absolute quality and competitive price drives Business", and that is the reason why SSSS with annual sales of over 24000 tons is way ahead of its competitors. With five fully operational branch offices across India including Chennai, Secunderabad, Mumbai, Coimbatore, Cochin, we have set benchmarks of excellence in the arena of supplying ferrous as well as non-ferrous metal serving to an assortment of Industries.

Our specialization lies in a bouquet of products in which we have carved a niche as one of the leading stockist, importers and suppliers of Stainless Steel Coils, Plates, Sheets, Pipe, Bars & Fittings. Growing tremendously in the domain, we have established imprints in the minds of global clients by serving them with superior quality products..

We also deal in Stainless Steel Raw Material like Sheets, Plates, Coils, Pipes, Bars, Fittings, etc in all major grades like 202, 304, 304L, 321, 316, 316L, 309S, 310, 310S, 409L, 409M, 410, 430 etc.



SALEM STAINLESS STEEL SUPPLIERS (P) LTD.,

HEAD OFFICE & REGD OFFICE  
33 Lower Chinna Thambi Street, Kondithope,  
Chennai - 600 079. Tamil Nadu

+91 44 4966 5555 | +91 90600 56789 |  
info@ssssgroup.com | ssssgroup

WAREHOUSING & SERVICE CENTER  
57/222, GNT Road, Puzal, Chennai – 600 066

PIPE WARE HOUSE - MADHAVARAM  
34, G.N.T. Road, Madhavaram, Chennai - 600 110

STOCK YARD - ALAMATHI  
Alamathi, 5/215 Cattle farm road, Chennai - 600052

Branches:  
COCHIN, COIMBATORE, HYDERABAD, MUMBAI & GROWING.....